

Vetus 80

Veterinary Diagnostic Ultrasound System

Born Extraordinary, Leading Expertise



LinkedIn Facebook Instagram

Search Mindray Animal Medical

www.mindrayanimal.com
service@mindrayanimal.com

P/N:ENG-BC-20 Vet-210285X4P-20240507
 ©2024 Shenzhen Mindray Animal Medical Technology Co., LTD. All rights reserved.

Mindray Animal Medical introduces its brand new high-end ultrasound, Vetus 80, equipped with the ZST⁺ platform and outstanding probes, bringing another leap forward in animal ultrasound imaging!

Additionally, Vetus 80 supports advanced applications such as exotic species scanning and UWN⁺ contrast imaging, greatly expanding the boundaries of animal ultrasound applications and further advancing ultrasound diagnosis.

Vetus 80



ZST⁺ platform



Outstanding probes



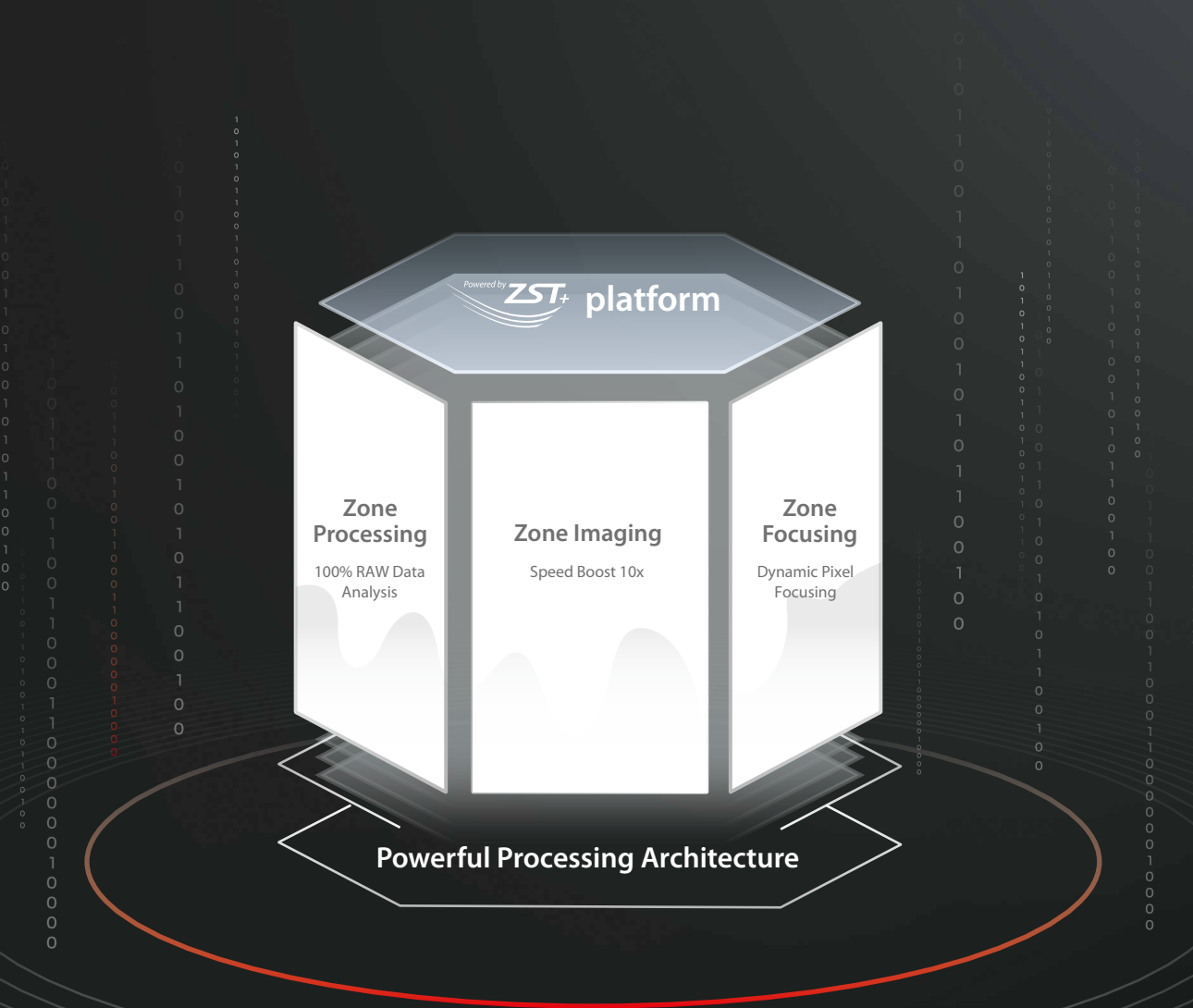
Exotic species scanning



Powerful Platform, Excellent Image

ZST+Platform

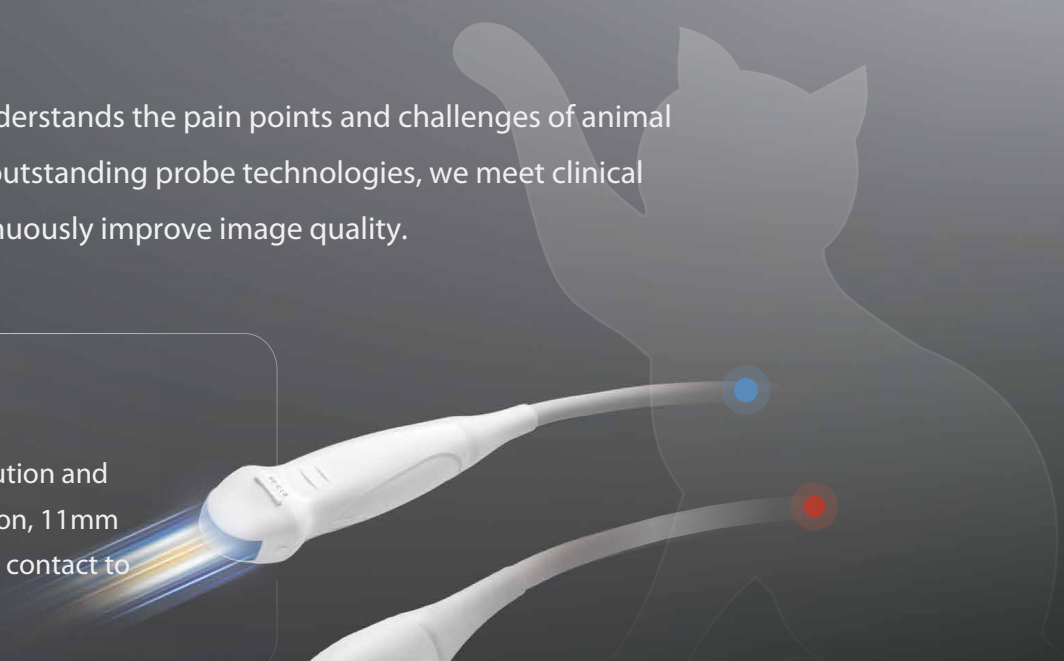
ZST+Platform is a globally leading ultrasound imaging platform. It is powered by three core technologies: Zone Imaging, Zone Focusing, and Zone Processing. It provides reliable performance for clinical diagnosis in animal ultrasound.



Mindray Animal Medical understands the pain points and challenges of animal ultrasound scanning. With outstanding probe technologies, we meet clinical diagnostic needs and continuously improve image quality.

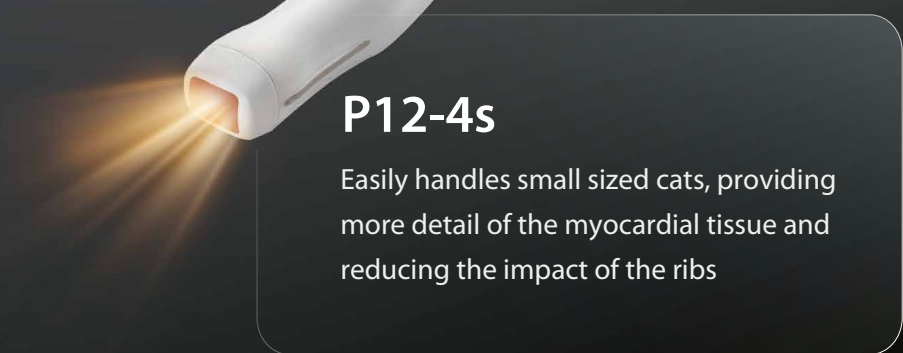
C13-3s

Excellent near-field resolution and superb grayscale resolution, 11mm radius that provides tight contact to the skin



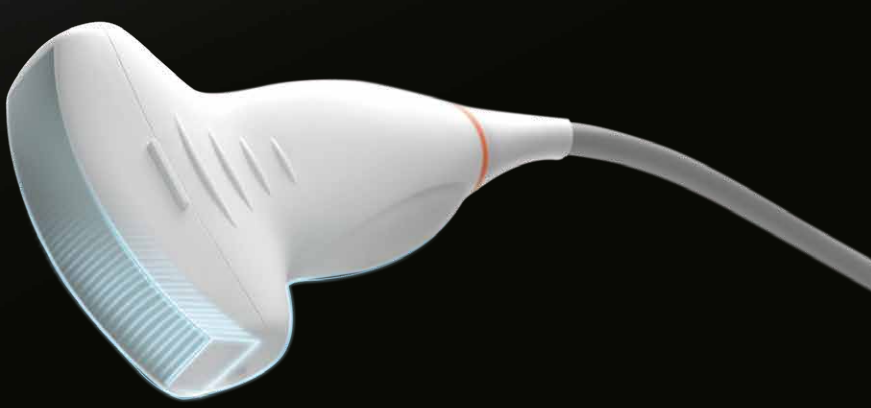
P12-4s

Easily handles small sized cats, providing more detail of the myocardial tissue and reducing the impact of the ribs



Single Crystal Technology

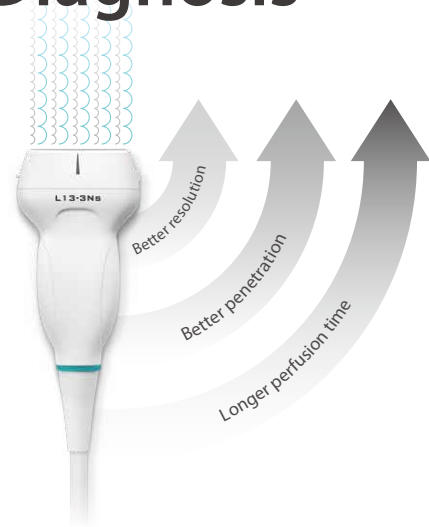
The SC5-1Ns and SP5-1Ns adopt single crystal technology, bringing excellent image penetration and resolution, effortlessly handling abdominal and cardiac scans of large animals.



Valuable Insight, Accurate Diagnosis

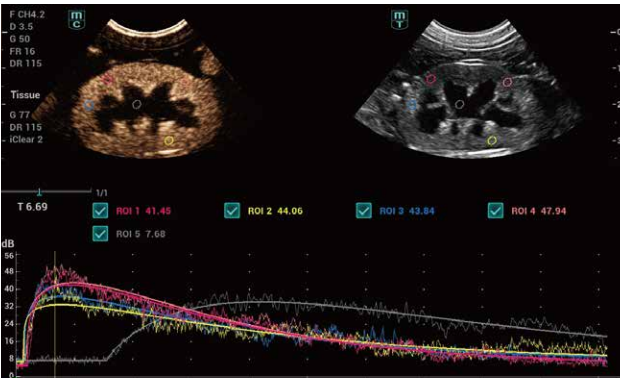
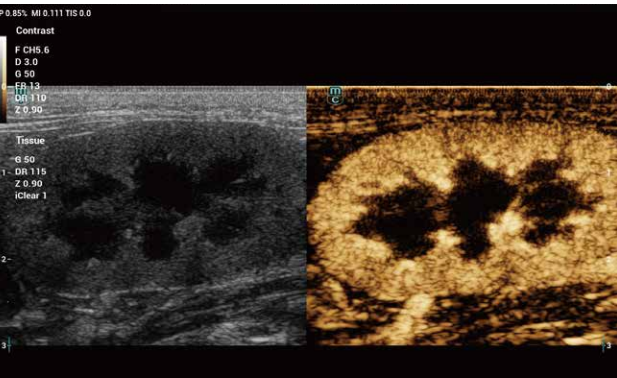
UWN+ Technology

UWN+(Ultra-Wideband Non-linear Plus) technology enables the Vetus 80 to detect and utilize both the 2nd harmonic and non-linear fundamental signals, generating significantly enhanced images, resulting in greater sensitivity of minor signals and longer agent duration with lower MI.



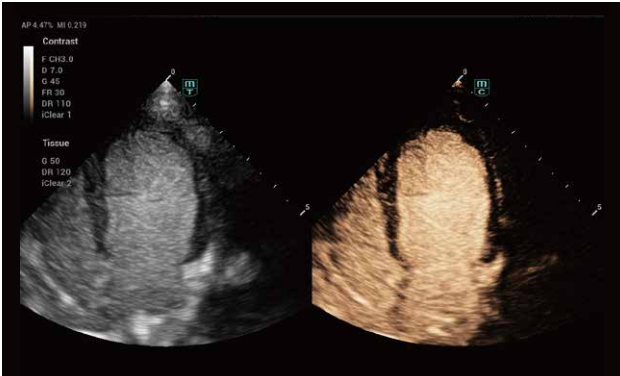
UWN+ Contrast Imaging of ABD & SMP

Supporting abundant probes, widely applicable for liver, kidney, and spleen. Additionally, through UWN+ contrast imaging quantitative analysis functionality, the entire imaging process can be quantitatively analyzed, leading to more accurate clinical diagnostic results.

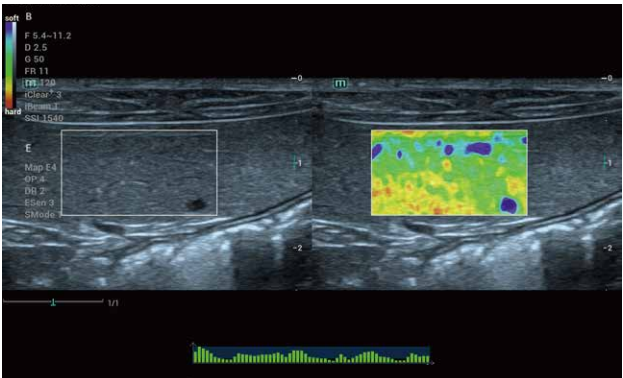


LVO (Left Ventricular Opacification)

Reveal structural and functional change of left ventricle with longer contrast agent duration and higher sensitivity with UWN+ technology.



Abdomen Solution

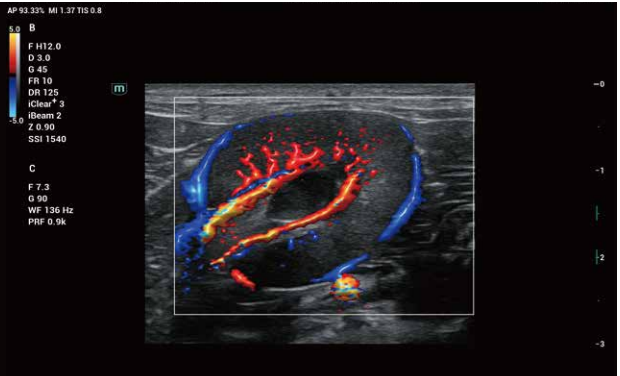


Natural Touch Elastography

Mindray Animal Medical's patented Natural Touch Elastography technology provides an accurate and reproducible assessment of soft tissues' elastic properties and stiffness.

Glazing Flow

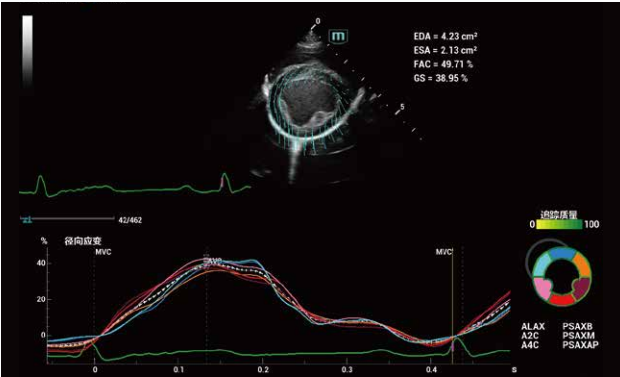
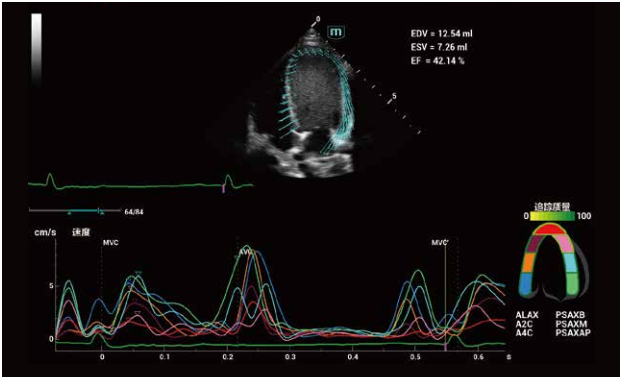
Mindray Animal's enriched Glazing Flow provides optimal visualization of micro-vascular perfusion states and improves delineation of vessel borders in an intuitive way by using a 3D visualization technology.



Cardiology Solution

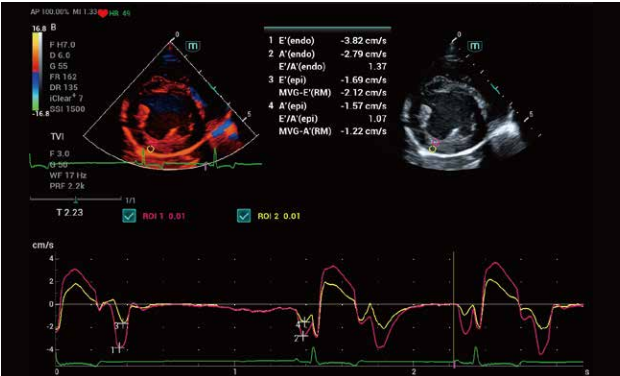
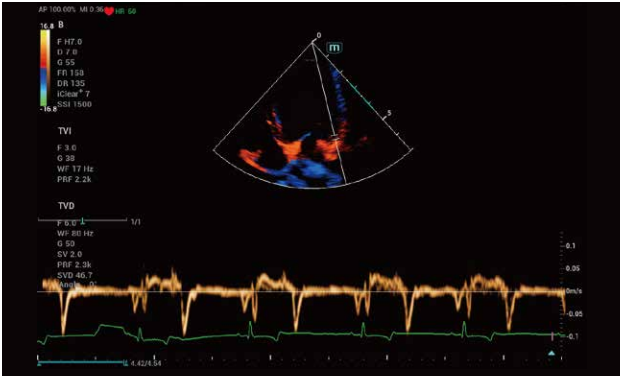
TT QA (Tissue Tracking Quantitative Analysis)

Based on the excellent transducer technology, Vetus 80 significantly improves the tracking accuracy and efficiency. With the unique added benefit of on-site analysis, the TT QA can be performed at the bedside, saving time and simplifying challenging diagnoses.



TDI & TDI QA

Tissue Doppler Imaging with Quantitative Analysis (TDI QA) supports 4 TDI imaging modes, including TVI, TEI, TVD, and TVM, providing multiple methods for assessing canine and feline cardiac diastolic and myocardial motility. In addition, TDI QA with max 8 ROI enables simultaneous analysis of 8 regions of myocardium, inclusive of the speed of myocardial movement, myocardial strain, strain rate, and myocardial synchrony.



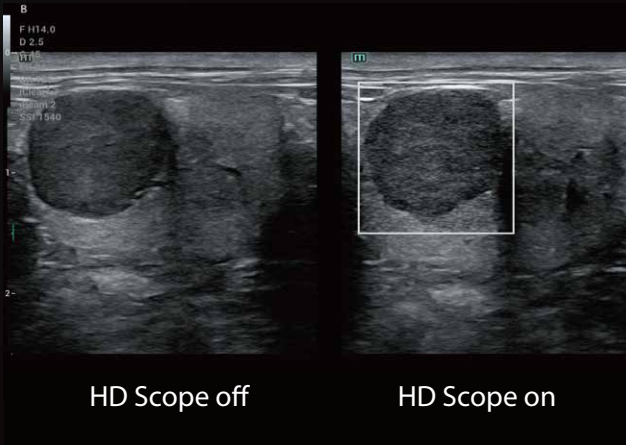
Exotic Species Solution

Dedicated exotic pet presets along with a L16-4Hs, hockey stick probe, the Vetus 80 delivers clear ultrasound images. These solutions are perfect for examinations of animals such as guinea pigs, mice, lizards, turtles and more.



HD Scope

By processing channel data collected by the ZST⁺ platform, HD Scope can improve the detail information and image contrast of a specific area, helping veterinarians further observe the tissue and lesion conditions of exotics.



Dedicated Workflow for Veterinarians

The animal information center that can export and import data to a PC easily

iStorage

Provide customized report templates with professional comments

iReport

Indicate potential or suspected clinical conditions immediately

iMeasure

iCompare

Display DR, CT and US images on the same screen, facilitating multiple real-time observations

iVocal

Remotely control the system by voice commands, free your hands from the machine

iWorks

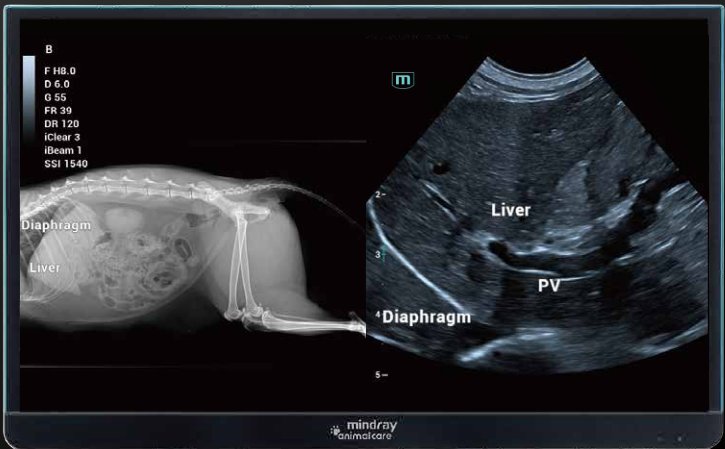
Standardize and simplify the workflow with customizable animal protocols, reducing exam time by 50% and keystrokes by 80%

iStation

Full-stack animal information management system

iScanHelper

A built-in expert, providing guided scanning tips, reference images and a demonstration guide



Finely Crafted, Merged with the Scene

The compact and agile body easily navigates through narrow spaces. With a total storage height of less than 1 meter, it is convenient for scanning large animals.



Built-In Battery

Supporting long-term uninterrupted scanning, providing powerful assurance for cage side examinations.



Innovative Control Panel

Enhance efficiency while reducing unnecessary information distractions.



Magnetic Front Cover

Reduce damage to the probe connector caused by fur, dander, dust, and animal fluids.



23.8" HD Full Screen
Adaptive brightness adjustment

Dual-wing Floating Arm
240 ° floating in all directions

15.6" Touch Screen
Highly customized layout

iLight
Grabbing items at ease with proper light

0.76m Minimum Height
Facilitates scanning of large animals on the floor

26dB Silence
Animal friendly

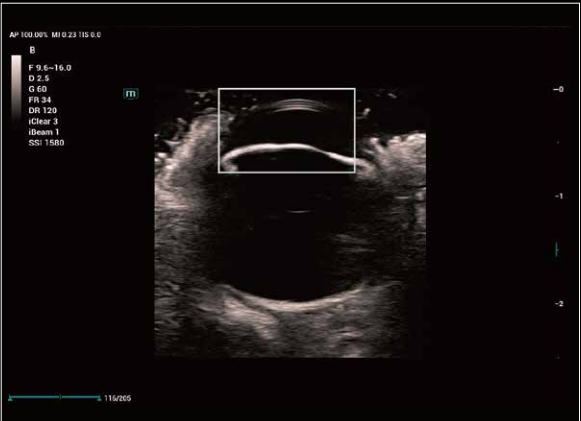
Superb Confidence with Excellent Images



Liver of Canine



Glazing Flow of Canine Hepatic Vascular



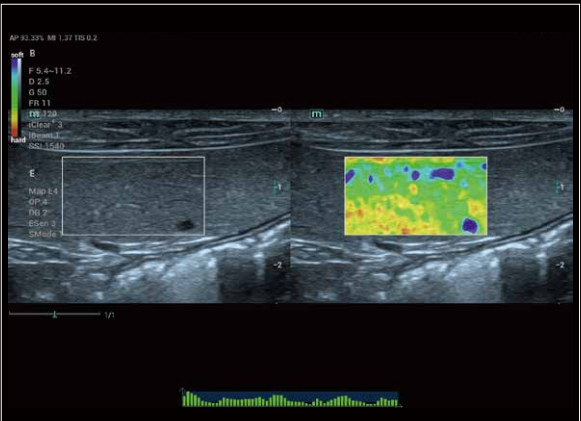
HD Scope of Canine Ophthalmology



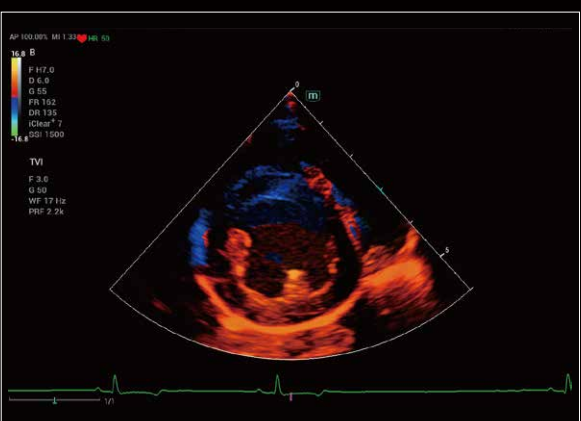
Cardiac of Canine



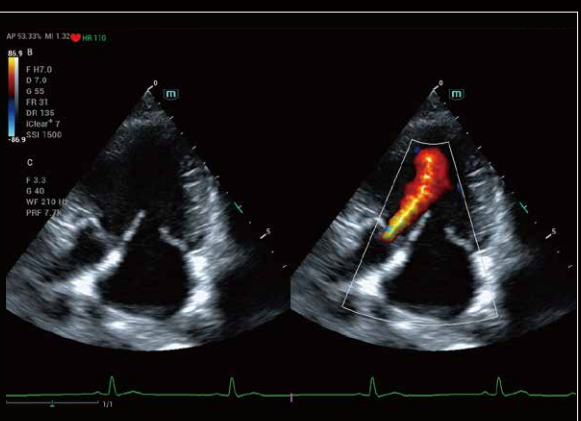
Glazing Flow of Canine Kidney



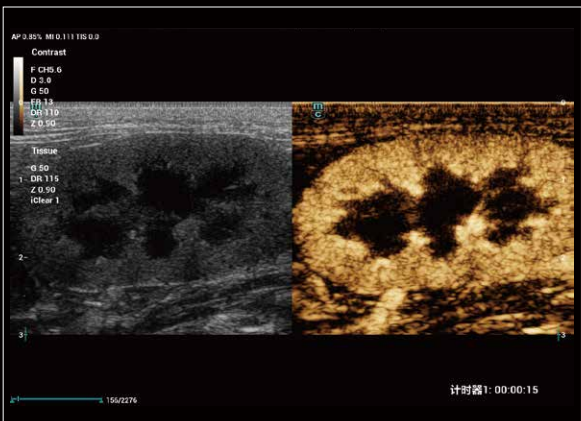
Elastography of Canine Spleen



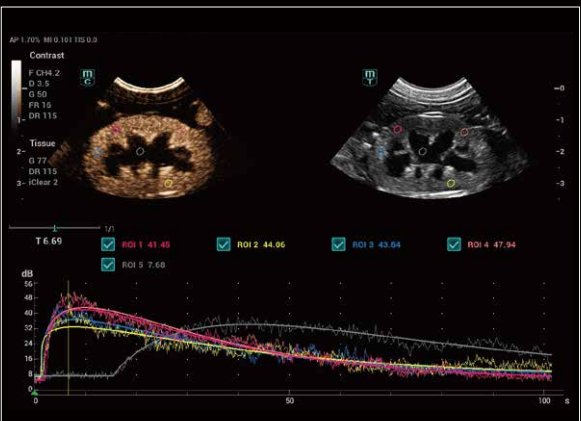
TVI of Canine Cardiac



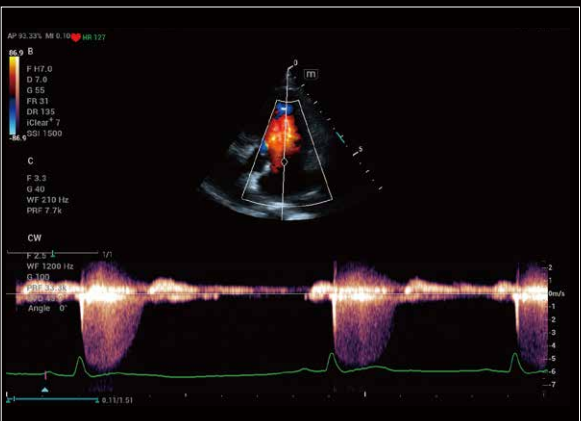
Aortic Regurgitation of Canine



CEUS of Feline Kidney



CEUS QA of Feline Kidney



CW of Canine Mitral Valve



LVO of Canine Left Ventricle